

- ✓ VEGETABLE SLICER 1100 W.
- ✓ 2 FIXED SPEEDS :  
320 RPM & 640 RPM.
- ✓ STAINLESS STEEL PUSHER HANDLE AND HOPPER.
- ✓ SINGLE-PHASED DELIVERED WITHOUT DISC.

## ADVANTAGES

- **French design and manufacture, guaranteed quality, robustness and repairability . The DYNAMIC vegetable slicer is easily disassembled, repairable and reassembled. DYNAMIC guarantees the immediate availability of spare parts.**
- **Thanks to its unique design, this is an extremely versatile and aesthetic device. The design is based on users' real needs: the use of first quality materials (stainless steel), thought-out ergonomics, details and tips guaranteeing hygiene and safety (patent pending).**
- **A product designed with sustainable development in mind – 80% of the materials used are made from stainless steel and aluminium.**

INOX

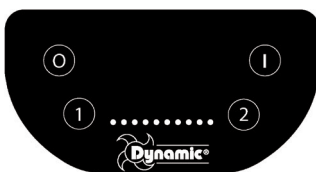


## DESCRIPTION

- Universal vegetable slicer with a large choice of stainless steel discs. All parts in contact with food are easily removable and dishwasher-proof for quick cleaning: cutting chamber, pusher, hopper and pusher handle. Thought-out ergonomics, the device is designed to be used by both left-and right-handed.
- Two hoppers to adapt to all types of vegetables: a wide hopper of 217 cm<sup>2</sup> for bulky vegetables such as cabbage, celeriac and a cylindrical hopper of Ø 60.5 cm for long and delicate vegetables (courgettes, cucumbers). A side food chute with a 20 cm passage to install a deep GN collection container (20 cm).
- An induction motor, integrated in the metal motor block, with a power of 1100 W. Easy to use control panel.
- Magnetic detection which prevents the appliance from starting if an anomaly is detected. The appliance stops as soon as it detects any type of inappropriate use.
- Optional stainless steel discs, dishwasher-proof.

## MAIN CHARACTERISTICS

- Capacity up to 300 kg/h, suitable for as much as 400 covers per service.
- Capable of grating, slicing, cutting fruits and vegetables.
- Ergonomic, ambidextrous, stainless steel push handle.
- All parts in contact with food are removable without tools and are dishwasher-proof.
- Easy to use waterproof control panel with on/off button, selected speed displayed 1 and 2.
- Very practical side disposal, without projection, enabling the use of deep collection containers.
- Automatic start with pusher-handle.
- Automatic magnetic detection for total operator safety.
- Wide choice of stainless steel discs with a diameter of 225 mm (optional).



1 FIXED SPEEDS PANEL CONTROL

## CONSTRUCTION

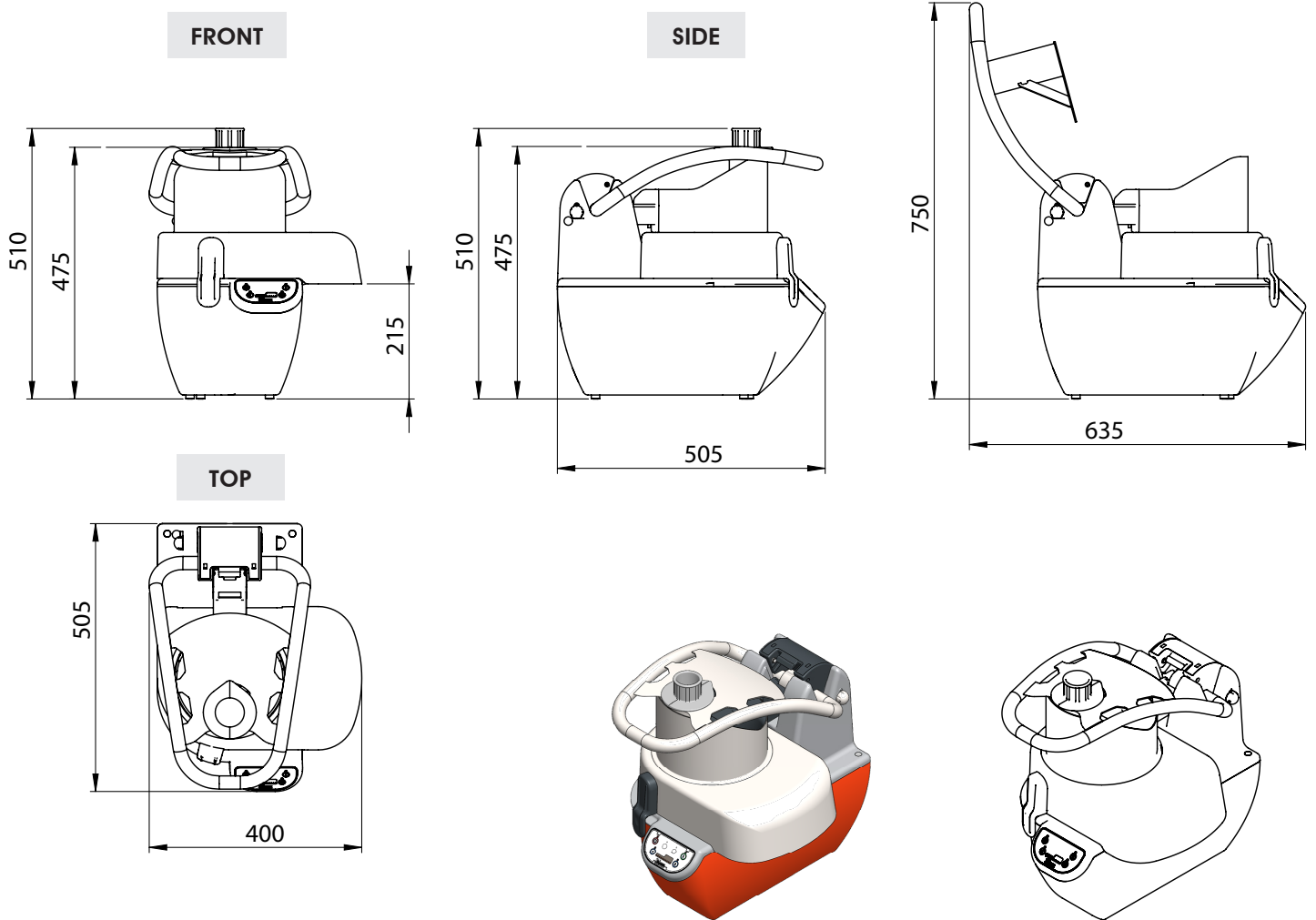
- An induction motor, integrated in the motor block, ensuring robustness and reliability over time.
- Integrated air vents on the motor unit for good engine ventilation.
- Extremely solid base.
- POWER : 1100 W – SINGLE-PHASE.
- 2 FIXED SPEEDS : 320 rpm and 640 rpm.
- Easy and quick to dismantle accessories without tools (patent pending).

## OPTIONAL ACCESSORIES

3X2MM JULIENNE DISC / **CL3032**2MM GRATING DISC / **CL2002**1,5MM SLICING DISC / **CL1015**

- |                 |   |                 |   |
|-----------------|---|-----------------|---|
| • <b>CL1005</b> | <input type="checkbox"/> 0,5MM SLICING DISC | • <b>CL2005</b> | <input type="checkbox"/> 5MM GRATING DISC       |
| • <b>CL1015</b> | <input type="checkbox"/> 1,5MM SLICING DISC | • <b>CL2009</b> | <input type="checkbox"/> 9MM GRATING DISC       |
| • <b>CL1025</b> | <input type="checkbox"/> 2,5MM SLICING DISC | • <b>CL3032</b> | <input type="checkbox"/> 3X2MM JULIENNE DISC    |
| • <b>CL1030</b> | <input type="checkbox"/> 3MM SLICING DISC   | • <b>CL3042</b> | <input type="checkbox"/> 4X2MM JULIENNE DISC    |
| • <b>CL1040</b> | <input type="checkbox"/> 4MM SLICING DISC   | • <b>CL3044</b> | <input type="checkbox"/> 4X4MM JULIENNE DISC    |
| • <b>CL1050</b> | <input type="checkbox"/> 5MM SLICING DISC   | • <b>CL3055</b> | <input type="checkbox"/> 5X5MM JULIENNE DISC    |
| • <b>CL1070</b> | <input type="checkbox"/> 7MM SLICING DISC   | • <b>CL3052</b> | <input type="checkbox"/> 5X2MM JULIENNE DISC    |
| • <b>CL1080</b> | <input type="checkbox"/> 8MM SLICING DISC   | • <b>CL3088</b> | <input type="checkbox"/> 8X8MM JULIENNE DISC    |
| • <b>CL1090</b> | <input type="checkbox"/> 9MM SLICING DISC   | • <b>CL4008</b> | <input type="checkbox"/> DICING KIT 8X8MM       |
| • <b>CL1110</b> | <input type="checkbox"/> 11MM SLICING DISC  | • <b>CL4010</b> | <input type="checkbox"/> DICING KIT 10X10MM     |
| • <b>CL1120</b> | <input type="checkbox"/> 12MM SLICING DISC  | • <b>CL5008</b> | <input type="checkbox"/> FRENCH FRIES KIT 8X8MM |
| • <b>CL1130</b> | <input type="checkbox"/> 13MM SLICING DISC  |                 |   |
| • <b>CL2002</b> | <input type="checkbox"/> 2MM GRATING DISC   |                 |   |
| • <b>CL2003</b> | <input type="checkbox"/> 3MM GRATING DISC   |                 |   |

## TECHNICAL SPECIFICATIONS



### ELECTRICAL FEATURES

VOLTAGE	220 - 240 V / 50 - 60 Hz
POWER	1100 W

### GENERAL INFORMATION

WIDTH	400 mm
HEIGHT	475 mm
DEPTH	505 mm